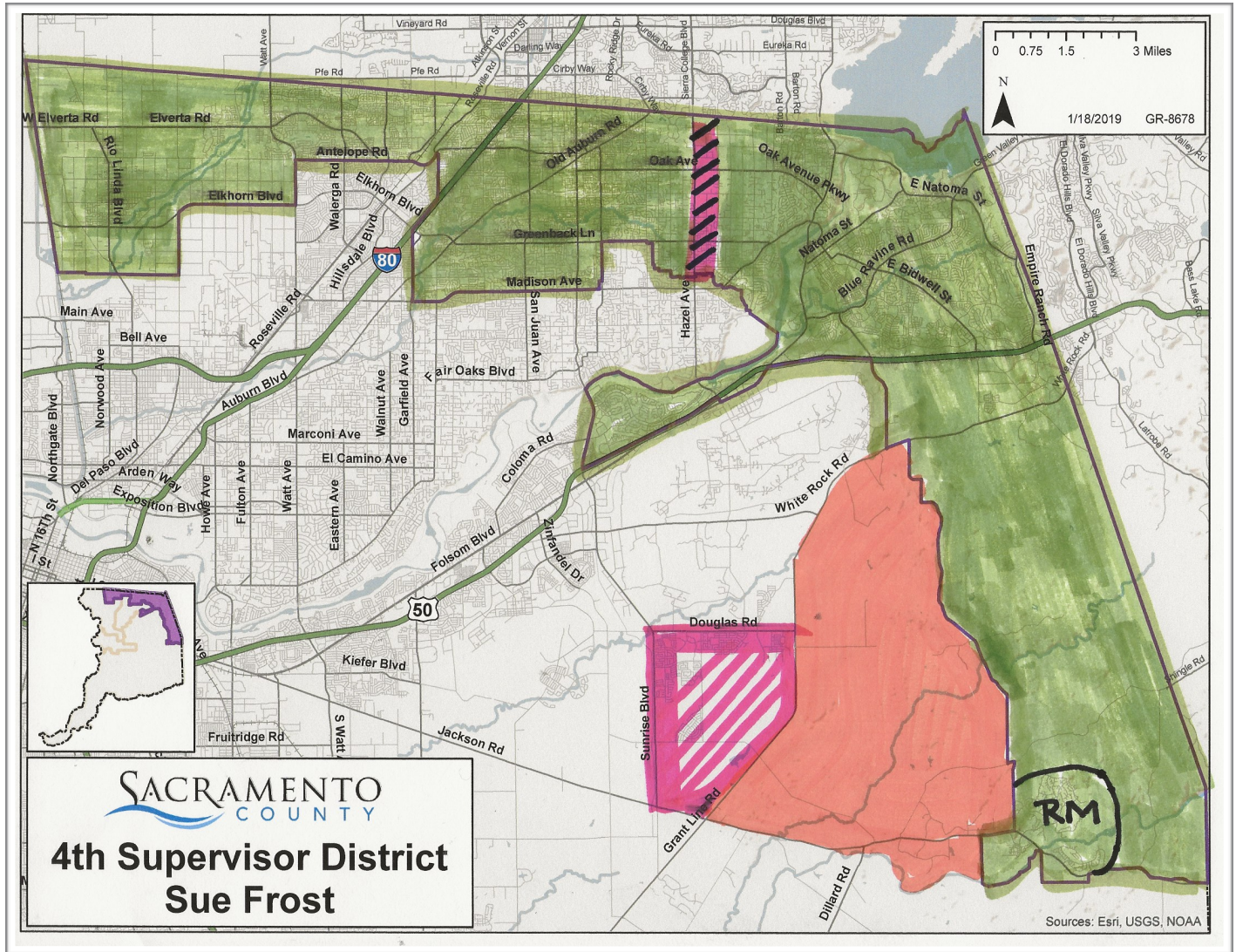


RANCHO MURIETA REDISTRICTING 2021

JOHN MERCHANT

916-761-2765

merchant30@gmail.com



GREEN: Existing District Four

ORANGE: Suggested addition to District Four

PINK BAR (BLACK STRIPES): Demarcation Line

RED (WITH STRIPES): Potential For Addition

BLACK CIRCLE: Rancho Murieta Census Designated Community

1

Rancho Murieta is a census designated community in unincorporated Sacramento County. It has a 2010 population of approximately 5,700. With development projects in various stages of completion, we estimate that population may grow to 9000 by 2030. Rancho Murieta is inside the County's urban services boundary. It is completely isolated (an island) in the middle of A2, A5 and A10 agricultural zoning. Over 7 miles separate Rancho Murieta from where the contiguous urban services boundary begins. In 2010, the redistricting process separated Rancho Murieta from District 5 and joined it to District 4. This severed a 25 year relationship with Supervisor Nottoli. Ms. Frost now represents our District and she is the third supervisor in ten years to represent the community. The continuity of remaining inside District 4 would be a huge asset to us in this upcoming, critical period of population growth and an impending transportation and commuting nightmare. Growth is heavily impacting Rancho Murieta both inside and outside of our community. This is to both the North and to the West.

If you refer to the map on page one, you will see a pink bar with black stripes. This bar represents a "demarkation line" that is the most critical redistricting point to our community. NO MATTER THE REDISTRICTING OUTCOME, everything EAST of this line must remain in one district! Rancho Murieta is in the process of being "boxed in" by the development of the unincorporated county at the intersection of Sunrise Blvd and the Jackson Highway. The county will add 26 traffic lights along the urbanized corridor of the Jackson Highway. We realize that we will be almost cut off from access to services to the West. Ultimately, with traffic already at a standstill to and from Elk Grove, Rancho Murieta will have only one access to service; to Folsom and the North.

RANCHO MURIETA AND FOLSOM MUST REMAIN IN A DISTRICT REPRESENTED BY A COMMON SUPERVISOR. THIS CANNOT CHANGE!

Folsom and Rancho Murieta share an undeveloped, rural boundary. The 5,700 residents of Rancho Murieta vigorously support Folsom commercial and retail business. We share a common transportation network. This centers around the Scott Road which links both communities.

The Scott Road is a rural road and is completely inside District 5. Scott, while a rural road, supports 750,000 trips per year. It is a dangerous ranch road, however, it will soon join Rancho Murieta with the JPA Connector and provide us with a signaled intersection at the entrance to Folsom. Without District 4 supervisor support and the collaborative support of the City of Folsom, Rancho Murieta would not have been able secure SACOG approval and fund this project. THE SCOTT ROAD IS A LIFELINE. IT SHOULD BE COMPLETELY IN A DISTRICT THAT ALSO REPRESENTS RANCHO MURIETA. By adding the primarily rural

area outlined on the map in orange, we would be able to achieve District 4 representation of both Rancho Murieta and the Scott Road. The same supervisor would also represent Folsom, which through route elimination, is becoming our sole source of medical and commercial services.

Adding the section of property highlighted on the map in orange would also bring supervisory representation to an additional area of the Cosumnes River. The Rancho Murieta Community Services District and the ranches to the East, currently operate and maintain the Cosumnes Irrigation Association. The "CIA DITCH" irrigates summer crops below Rancho Murieta on lands currently represented by District 5. It would be a valuable change to integrate this agricultural land into a common supervisory district.

The Cosumnes is our water supply. It is imperative that all of the impacted residents inside the Rancho Murieta Community Services District be represented by a common supervisor. THIS CAN BE ACCOMPLISHED BY A MINIMAL INCREASE IN THE POPULATION OF THE CURRENT DISTRICT 4. I have outlined another section of agricultural land now in District 5 with a pink stripe. This represents acreage and minimal population that could be integrated into District 4 should any adjustments to the District 4 population be necessary. Again, note the demarkation line. Nothing to the east of that line, in our opinion, should be separated from Rancho Murieta.

More than any community in the County, Rancho Murieta is impacted by the operation and transportation issues of the Sacramento County Landfill. I believe it is imperative that the Landfill and Rancho Murieta share the same supervisor. Until 2010, this was always the case. Rancho Murieta has a long and confrontative history with landfill operations. This is why the orange area of the map expands a common supervisor representation to the east side of what is now Grant Line Road. This will soon become a segment of the JPA Connector, which we will use when traveling north to either Rancho Murieta or Folsom. A common supervisor to our North and East would also consolidate supervisory representation for the entire northern section of the JPA Connector. This would allow Rancho Murieta to INTERACT with both CALTRANS and the JPA Connector with a single, representative voice. We, to date, have never had this luxury.

Rancho Murieta has a long history of being "neither fish nor fowl" and it's relationship with Sacramento is finally on a solid footing. Our fear is that we will be "gerrymandered" into a compromise of convenience. If we are placed in a situation where our votes do not matter or combined in a district whose urban population overwhelms us, we will again become the "Forgotten Community". Your attention to our concerns is most appreciated.
