

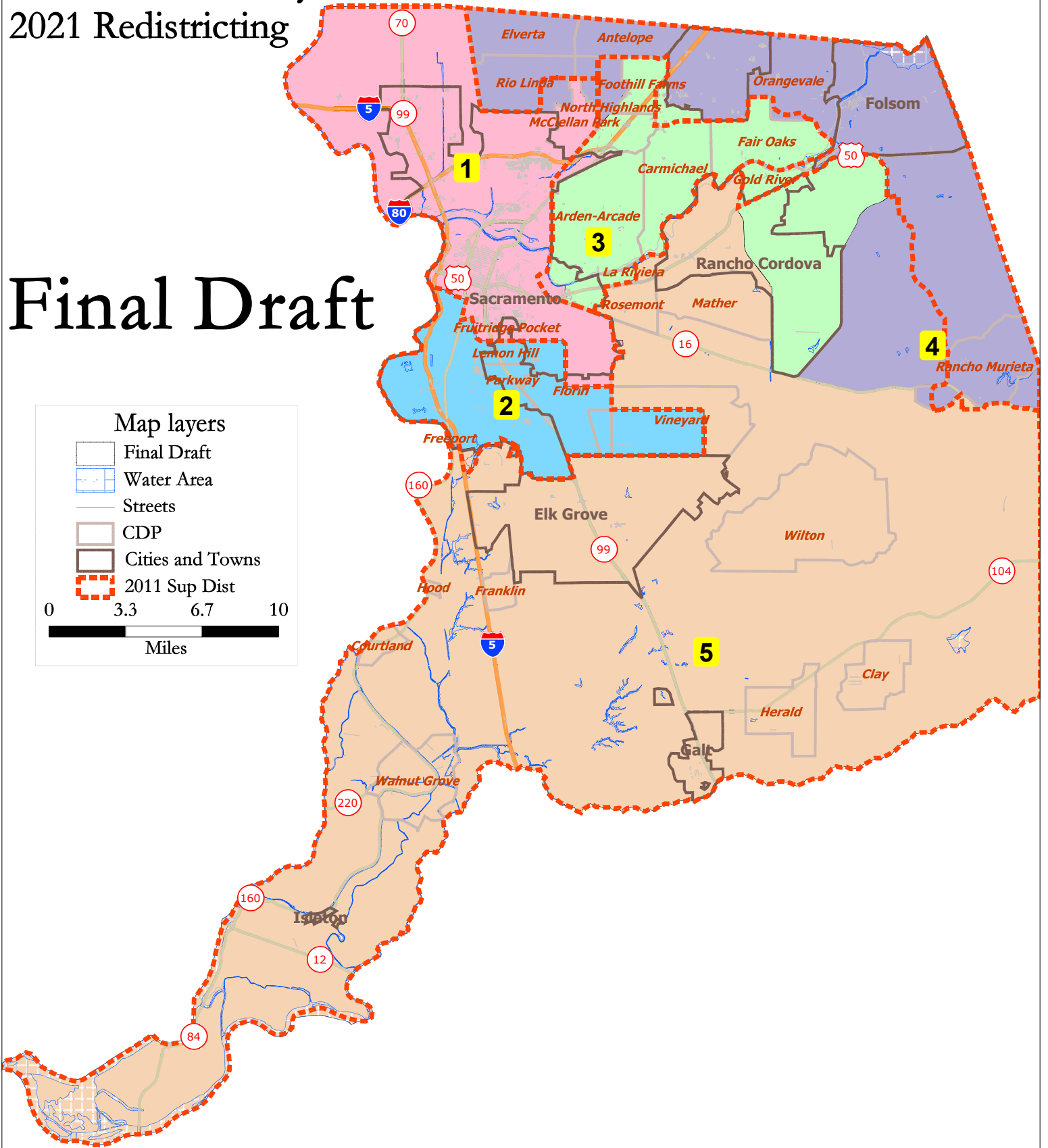
Sacramento County 2021 Redistricting

Final Draft

Map layers

- Final Draft
- Water Area
- Streets
- CDP
- Cities and Towns
- 2011 Sup Dist

0 3.3 6.7 10
Miles



Final Draft							
District		1	2	3	4	5	Total
	Total Pop	324,499	316,247	314,595	301,190	328,355	1,584,886
	Deviation from ideal	7,522	-730	-2,382	-15,787	11,378	27,165
	% Deviation	2.37%	-0.23%	-0.75%	-4.98%	3.59%	8.57%
Total Pop	% Hisp	29.4%	29%	18%	18%	23%	24%
	% NH White	35%	19%	56%	60%	37%	41%
	% NH Black	13%	15%	9%	5%	10%	10%
	% Asian-American	17%	30%	13%	12%	25%	19%
Citizen Voting Age Pop	Total	206,776	194,709	209,179	207,392	217,431	1,035,487
	% Hisp	23%	21%	14%	13%	18%	18%
	% NH White	45%	29%	67%	71%	47%	52%
	% NH Black	15%	17%	8%	5%	11%	11%
	% Asian/Pac.Isl.	15%	30%	9%	9%	21%	17%
Voter Registration (Nov 2020)	Total	176,170	160,723	183,032	180,596	191,974	892,495
	% Latino est.	21%	22%	12%	11%	18%	17%
	% Spanish-Surnamed	20%	20%	11%	11%	17%	16%
	% Asian-Surnamed	7%	16%	4%	4%	11%	8%
	% Filipino-Surnamed	2%	2%	1%	1%	3%	2%
	% NH White est.	53%	38%	75%	78%	55%	61%
Voter Turnout (Nov 2020)	Total	139,599	121,711	151,853	150,706	157,785	721,654
	% Latino est.	20%	21%	11%	10%	17%	16%
	% Spanish-Surnamed	19%	20%	10%	10%	16%	15%
	% Asian-Surnamed	7%	16%	4%	4%	11%	8%
	% Filipino-Surnamed	2%	2%	1%	1%	3%	2%
	% NH White est.	55%	40%	77%	79%	56%	63%
Voter Turnout (Nov 2018)	Total	95,821	83,144	111,682	104,673	107,912	503,232
	% Latino est.	18%	19%	9%	9%	16%	14%
	% Spanish-Surnamed	17%	18%	9%	9%	15%	13%
	% Asian-Surnamed	6%	13%	3%	3%	9%	7%
	% Filipino-Surnamed	1%	2%	1%	1%	2%	1%
	% NH White est.	60%	44%	80%	82%	60%	66%
ACS Pop. Est.	Total	301,365	305,023	299,318	296,965	316,913	1,519,585
Age	age0-19	25%	28%	24%	26%	27%	26%
	age20-60	58%	53%	53%	53%	54%	54%
	age60plus	17%	19%	23%	20%	19%	20%
Immigration	immigrants	20%	28%	18%	16%	22%	21%
	naturalized	52%	59%	48%	60%	66%	58%
Language spoken at home	english	65%	54%	74%	76%	67%	67%
	spanish	19%	19%	10%	9%	12%	14%
	asian-lang	8%	20%	5%	5%	12%	10%
	other lang	8%	7%	11%	10%	9%	9%
Language Fluency	Speaks Eng. "Less than Very Well"	12%	22%	10%	8%	13%	13%
Education (among those age 25+)	hs-grad	43%	48%	47%	51%	48%	47%
	bachelor	23%	16%	22%	21%	22%	21%
	graduatedegree	13%	7%	13%	10%	9%	10%
Child in Household	child-under18	29%	38%	29%	35%	38%	34%
Pct of Pop. Age 16+	employed	66%	60%	62%	64%	64%	63%
Household Income	income 0-25k	21%	21%	20%	13%	13%	18%
	income 25-50k	20%	23%	21%	18%	17%	20%
	income 50-75k	17%	18%	17%	18%	17%	17%
	income 75-200k	35%	33%	34%	43%	45%	38%
	income 200k-plus	7%	5%	8%	8%	8%	7%
Housing Stats	single family	64%	79%	65%	81%	85%	74%
	multi-family	36%	21%	35%	19%	15%	26%
	rented	56%	44%	48%	35%	33%	44%
	owned	44%	56%	52%	65%	67%	56%

This doesn't make sense to me. How can one have a deviation from an ideal population? How can one have an ideal population? Isn't it just the actual population?

Total population data from the 2020 Decennial Census.

Surname-based Voter Registration and Turnout data from the California Statewide Database.

Latino voter registration and turnout data are Spanish-surname counts adjusted using Census Population Department undercount estimates. NH White and NH Black registration and turnout counts estimated by NDC. Citizen Voting Age Pop., Age, Immigration, and other demographics from the 2015-2019 American Community Survey and Special Tabulation 5-year data.