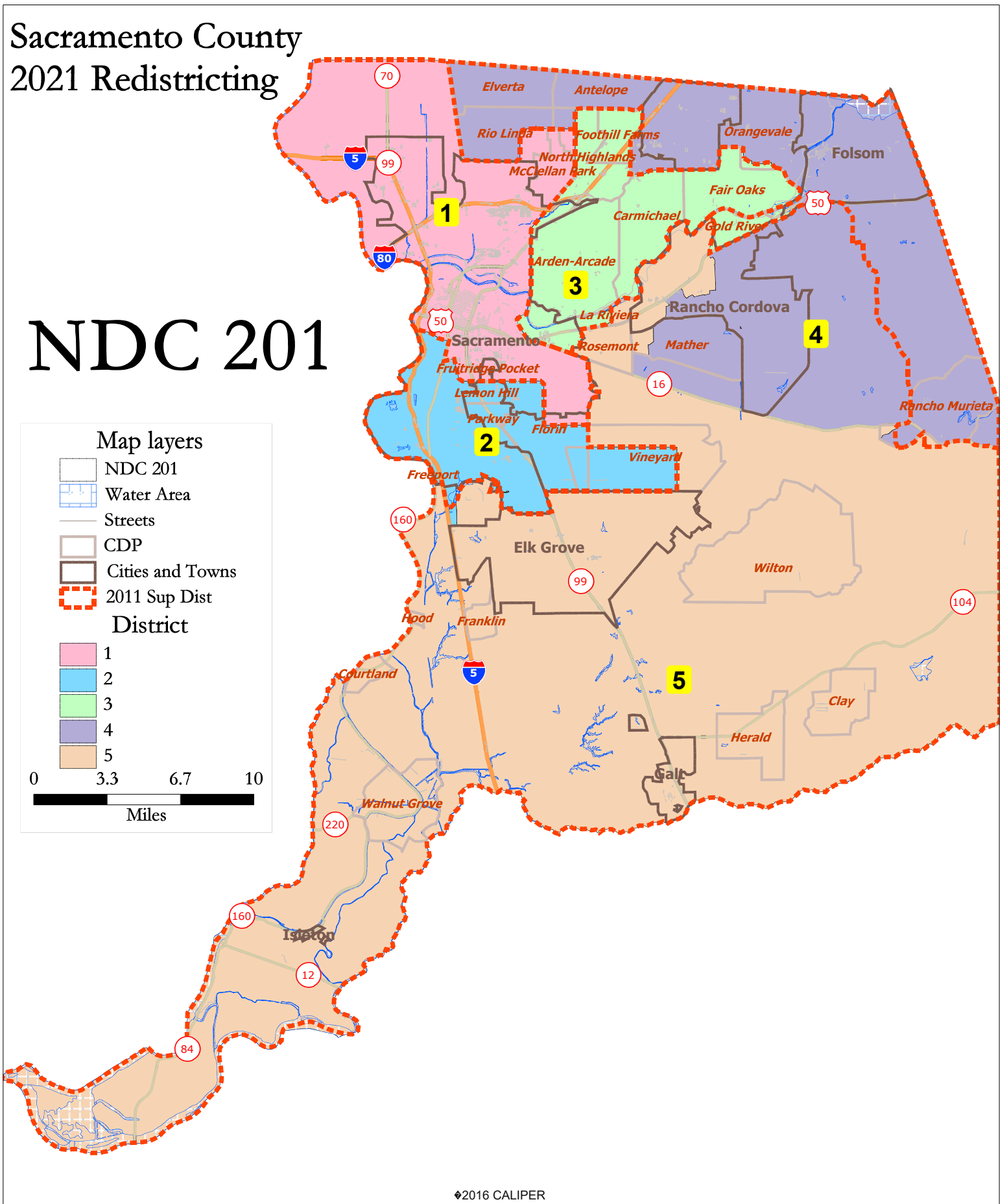


Sacramento County 2021 Redistricting

NDC 201



NDC 201

District		1	2	3	4	5	Total
	Total Pop	321,735	316,094	319,561	315,907	311,589	1,584,886
	Deviation from ideal	4,758	-883	2,584	-1,070	-5,388	10,146
	% Deviation	1.50%	-0.28%	0.82%	-0.34%	-1.70%	3.20%
Total Pop	% Hisp	29.4%	29%	20%	16%	23%	24%
	% NH White	35%	19%	55%	60%	37%	41%
	% NH Black	13%	15%	9%	5%	10%	10%
	% Asian-American	17%	30%	11%	13%	25%	19%
Citizen Voting Age Pop	Total	205,365	194,619	213,272	215,042	207,191	1,035,487
	% Hisp	23%	21%	15%	12%	18%	18%
	% NH White	45%	29%	66%	71%	47%	52%
	% NH Black	14%	17%	9%	5%	11%	11%
	% Asian/Pac.Isl.	15%	30%	8%	10%	21%	17%
Voter Registration (Nov 2020)	Total	176,317	160,648	181,450	190,975	183,105	892,495
	% Latino est.	21%	22%	12%	11%	19%	17%
	% Spanish-Surnamed	20%	20%	12%	10%	17%	16%
	% Asian-Surnamed	7%	16%	3%	5%	12%	8%
	% Filipino-Surnamed	2%	2%	1%	1%	3%	2%
	% NH White est.	54%	38%	75%	78%	55%	61%
	% NH Black	16%	22%	9%	5%	12%	12%
Voter Turnout (Nov 2020)	Total	139,724	121,660	149,184	160,428	150,658	721,654
	% Latino est.	20%	21%	11%	10%	18%	16%
	% Spanish-Surnamed	19%	20%	11%	10%	17%	15%
	% Asian-Surnamed	7%	16%	3%	5%	11%	8%
	% Filipino-Surnamed	2%	2%	1%	1%	3%	2%
	% NH White est.	56%	40%	76%	78%	56%	63%
	% NH Black	15%	20%	8%	5%	12%	11%
Voter Turnout (Nov 2018)	Total	95,878	83,126	109,956	110,907	103,365	503,232
	% Latino est.	18%	19%	9%	9%	16%	14%
	% Spanish-Surnamed	17%	18%	9%	8%	15%	13%
	% Asian-Surnamed	6%	13%	3%	4%	9%	7%
	% Filipino-Surnamed	1%	2%	1%	1%	2%	1%
	% NH White est.	60%	44%	79%	81%	60%	66%
	% NH Black est.	13%	20%	7%	4%	12%	11%
ACS Pop. Est.	Total	300,026	304,872	305,902	307,293	301,492	1,519,585
Age	age0-19	25%	28%	25%	26%	27%	26%
	age20-60	58%	53%	53%	54%	54%	54%
	age60plus	17%	19%	23%	20%	19%	20%
Immigration	immigrants	20%	28%	18%	17%	22%	21%
	naturalized	52%	59%	47%	62%	66%	58%
Language spoken at home	english	65%	54%	74%	76%	67%	67%
	spanish	19%	19%	11%	8%	13%	14%
	asian-lang	8%	20%	4%	6%	12%	10%
	other lang	8%	7%	11%	11%	8%	9%
Language Fluency	Speaks Eng. "Less than Very Well"	12%	22%	10%	8%	13%	13%
Education (among those age 25+)	hs-grad	43%	48%	48%	50%	48%	47%
	bachelor	22%	16%	21%	22%	22%	21%
	graduatedegree	13%	7%	12%	11%	9%	10%
Child in Household	child-under18	30%	38%	29%	35%	39%	34%
Pct of Pop. Age 16+	employed	66%	60%	61%	66%	63%	63%
Household Income	income 0-25k	21%	21%	21%	13%	13%	18%
	income 25-50k	20%	23%	22%	17%	17%	20%
	income 50-75k	17%	18%	17%	17%	17%	17%
	income 75-200k	36%	33%	32%	44%	45%	38%
	income 200k-plus	7%	5%	8%	9%	8%	7%
Housing Stats	single family	65%	79%	65%	79%	86%	74%
	multi-family	35%	21%	35%	21%	14%	26%
	rented	55%	44%	49%	35%	32%	44%
	owned	45%	56%	51%	65%	68%	56%

Total population data from the 2020 Decennial Census.

Surname-based Voter Registration and Turnout data from the California Statewide Database.

Latino voter registration and turnout data are Spanish-surname counts adjusted using Census Population Department undercount estimates. NH White and NH Black registration and turnout counts estimated by NDC. Citizen Voting Age Pop., Age, Immigration, and other demographics from the 2015-2019 American Community Survey and Special Tabulation 5-year data.