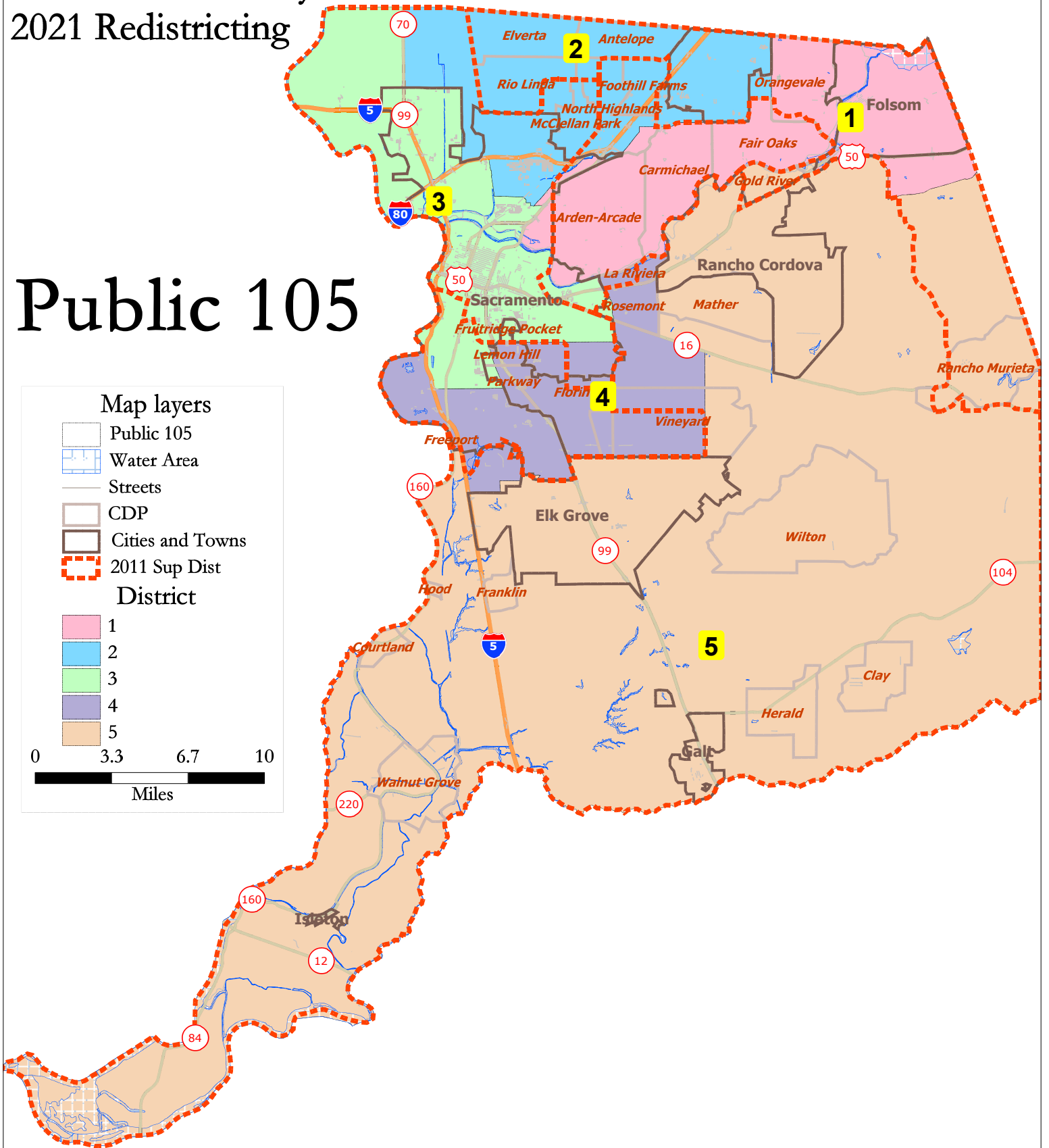


# Sacramento County 2021 Redistricting

## Public 105

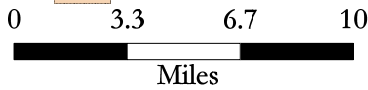


### Map layers

- Public 105
- Water Area
- Streets
- CDP
- Cities and Towns
- 2011 Sup Dist

### District

- 1
- 2
- 3
- 4
- 5



Public 105							
District		1	2	3	4	5	Total
	Total Pop	317,738	310,825	315,093	315,253	325,977	1,584,886
	Deviation from ideal	761	-6,152	-1,884	-1,724	9,000	15,152
	% Deviation	0.24%	-1.94%	-0.59%	-0.54%	2.84%	4.78%
Total Pop	% Hisp	15.4%	25%	27%	28%	22%	24%
	% NH White	59%	50%	38%	20%	38%	41%
	% NH Black	6%	9%	12%	15%	9%	10%
	% Asian-American	14%	10%	17%	30%	25%	19%
Citizen Voting Age Pop	Total	215,818	202,513	209,805	194,330	213,020	1,035,487
	% Hisp	12%	17%	22%	21%	17%	18%
	% NH White	72%	61%	48%	30%	49%	52%
	% NH Black	6%	10%	13%	17%	11%	11%
	% Asian/Pac.Isl.	8%	9%	15%	29%	22%	17%
Voter Registration (Nov 2020)	Total	195,094	162,525	182,093	159,452	193,331	892,495
	% Latino est.	10%	16%	20%	22%	17%	17%
	% Spanish-Surnamed	9%	15%	19%	20%	16%	16%
	% Asian-Surnamed	4%	3%	7%	15%	11%	8%
	% Filipino-Surnamed	1%	1%	2%	2%	3%	2%
	% NH White est.	80%	69%	56%	39%	57%	61%
	% NH Black	5%	11%	14%	22%	11%	12%
Voter Turnout (Nov 2020)	Total	166,543	125,202	149,478	119,887	160,544	721,654
	% Latino est.	9%	14%	19%	21%	17%	16%
	% Spanish-Surnamed	9%	14%	18%	19%	16%	15%
	% Asian-Surnamed	4%	3%	7%	15%	11%	8%
	% Filipino-Surnamed	1%	1%	2%	2%	3%	2%
	% NH White est.	81%	70%	58%	41%	58%	63%
	% NH Black	4%	10%	13%	21%	11%	11%
Voter Turnout (Nov 2018)	Total	124,844	81,330	106,863	79,778	110,417	503,232
	% Latino est.	8%	12%	17%	19%	15%	14%
	% Spanish-Surnamed	7%	12%	16%	18%	14%	13%
	% Asian-Surnamed	3%	3%	6%	13%	9%	7%
	% Filipino-Surnamed	1%	1%	1%	2%	2%	1%
	% NH White est.	83%	73%	62%	44%	62%	66%
	% NH Black est.	4%	9%	12%	20%	11%	11%
ACS Pop. Est.	Total	305,205	305,534	293,507	303,503	311,835	1,519,585
Age	age0-19	24%	28%	23%	28%	27%	26%
	age20-60	52%	54%	58%	53%	53%	54%
	age60plus	23%	18%	19%	18%	20%	20%
Immigration	immigrants	17%	21%	18%	28%	22%	21%
	naturalized	48%	55%	55%	60%	66%	58%
Language spoken at home	english	78%	67%	70%	54%	67%	67%
	spanish	8%	15%	16%	19%	12%	14%
	asian-lang	5%	5%	8%	19%	12%	10%
	other lang	9%	12%	7%	8%	9%	9%
Language Fluency	Speaks Eng. "Less than Very Well"	7%	13%	10%	21%	13%	13%
Education (among those age 25+)	hs-grad	42%	58%	40%	49%	46%	47%
	bachelor	25%	13%	25%	16%	23%	21%
	graduatedegree	16%	5%	15%	6%	10%	10%
Child in Household	child-under18	30%	37%	27%	38%	38%	34%
Pct of Pop. Age 16+	employed	62%	63%	66%	61%	64%	63%
Household Income	income 0-25k	18%	18%	20%	20%	12%	18%
	income 25-50k	18%	24%	19%	23%	16%	20%
	income 50-75k	15%	21%	17%	19%	16%	17%
	income 75-200k	37%	35%	37%	34%	47%	38%
	income 200k-plus	11%	3%	8%	4%	9%	7%
Housing Stats	single family	68%	77%	65%	78%	86%	74%
	multi-family	32%	23%	35%	22%	14%	26%
	rented	44%	44%	53%	45%	30%	44%
	owned	56%	56%	47%	55%	70%	56%

Total population data from the 2020 Decennial Census.

Surname-based Voter Registration and Turnout data from the California Statewide Database.

Latino voter registration and turnout data are Spanish-surname counts adjusted using Census Population Department undercount estimates. NH White and NH Black registration and turnout counts estimated by NDC. Citizen Voting Age Pop., Age, Immigration, and other demographics from the 2015-2019 American Community Survey and Special Tabulation 5-year data.