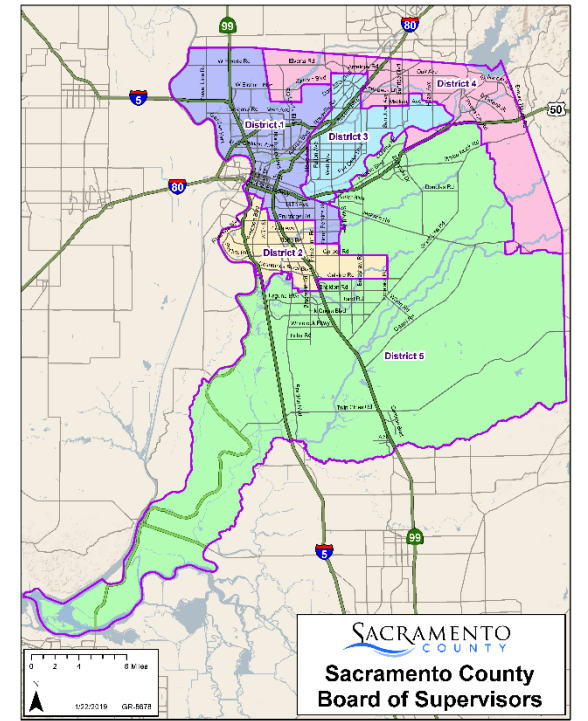


Sacramento County 2021 Redistricting Process



Redistricting Timeline Part I

Date	Event
May 4	Board review of schedule and decision on any commission
June 8	First Official Board Hearing to receive public input on communities of interest and other community mapping priorities
June 21, 6:05 pm June 23, 9:30 am	Two virtual initial community workshops
Late June and July	Workshop held in each district
August 10	Second Official Board Hearing to receive public input on communities of interest and other community mapping priorities
August 16	Census Bureau releases 2020 Census data
Around October 1	Official California Redistricting Data Released

Redistricting Timeline Part II

Date	Event
October 15	Deadline for initial draft maps from the public for Nov. 2 presentation
Nov. 2	Third Official Board Hearing on Redistricting
Nov. 16	Fourth Official Board Hearing on Redistricting – Map adoption.
Nov. 17	Fifth Official Board Hearing on Redistricting – First Reading of Ordinance
Dec. 7	Second Reading of Ordinance
Dec. 15	Statutory deadline to adopt map

Redistricting Rules and Goals

1. Federal Laws

- **Equal Population**
- **Federal Voting Rights Act**
- **No Racial Gerrymandering**



2. California Criteria for Counties

1. **Geographically contiguous**
2. **Undivided neighborhoods and “communities of interest”**
(Socio-economic geographic areas that should be kept together)
3. **Cities and CDP’s**
4. **Easily identifiable boundaries**
5. **Compact**
(Do not bypass one group of people to get to a more distant group of people)

Prohibited Considerations:

“Shall not favor or discriminate against a political party.”

3. Other Traditional Redistricting Principles

- **Minimize voters shifted to different election years**
- **Respect voters’ choices / continuity in office**
- **Future population growth**
- **Preserving the core of existing districts**

Defining Neighborhoods

1st Question: what is your neighborhood?

2nd Question: what are its geographic boundaries?

Examples of physical features defining a neighborhood boundary:

- ❑ Natural neighborhood dividing lines, such as highway or major roads, rivers, canals and/or hills
- ❑ Areas around parks or schools
- ❑ Other neighborhood landmarks

In the absence of public testimony, planning records and other similar documents may provide definition.



Beyond Neighborhoods: Defining Communities of Interest

1st Question: what defines your community?

- Geographic Area, plus
- Shared issue or characteristic
 - Shared social or economic interest
 - Impacted by county policies
- Tell us “your community’s story”

2nd Question:

Would this community benefit from being “included within a single district for purposes of its effective and fair representation”?

- Or would it benefit more from having multiple representatives?

Definitions of Communities of Interest may not include relationships with political parties, incumbents, or political candidates.

Share Your Thoughts

**To make a live comment at this
workshop call:**

(916) 875-2500

Select 1 to comment

www.saccounty.net/Redistricting/

For questions call: (916) 874-5411

Email: Redistricting@saccounty.net