

Sacramento County 2021 Redistricting Process

June 21, 2021

Redistricting Timeline Part I

Date	Event
May 4	Board review of schedule and decision on any commission
June 8	First Official Board Hearing to receive public input on communities of interest and other community mapping priorities
June 21, 6:05 pm June 23, 9:30 am	Two virtual initial community workshops
Late June and July	Workshop held in each district
August 10	Second Official Board Hearing to receive public input on communities of interest and other community mapping priorities
Mid- or Late-August	Census Bureau releases 2020 Census data
Four to Six weeks later	Official California Redistricting Data Released

Redistricting Timeline Part II

Date	Event
October 15	Deadline for initial draft maps from the public for Nov. 2 presentation
Nov. 2	Third Official Board Hearing on Redistricting
Nov. 17	Fourth Official Board Hearing on Redistricting
Dec. 7	Fifth Official Board Hearing on Redistricting
Dec. 15	Statutory deadline to adopt map

* Pending: SB 594 would allow adoption by resolution.

Redistricting Rules and Goals

1. Federal Laws

- **Equal Population**
- **Federal Voting Rights Act**
- **No Racial Gerrymandering**

2. California Criteria for Counties

1. **Geographically contiguous**
2. **Undivided neighborhoods and “communities of interest”**
(Socio-economic geographic areas that should be kept together)
3. **Cities and CDP’s**
4. **Easily identifiable boundaries**
5. **Compact**
(Do not bypass one group of people to get to a more distant group of people)

Prohibited Considerations:

“Shall not favor or discriminate against a political party.”

3. Other Traditional Redistricting Principles

- **Minimize voters shifted to different election years**
- **Respect voters’ choices / continuity in office**
- **Future population growth**
- **Preserving the core of existing districts**



Defining Neighborhoods

1st Question: what is your neighborhood?

2nd Question: what are its geographic boundaries?

Examples of physical features defining a neighborhood boundary:

- Natural neighborhood dividing lines, such as highway or major roads, rivers, canals and/or hills
- Areas around parks or schools
- Other neighborhood landmarks

In the absence of public testimony, planning records and other similar documents may provide definition.



Beyond Neighborhoods: Defining Communities of Interest

1st Question: what defines your community?

- Geographic Area, plus
- Shared issue or characteristic
 - Shared social or economic interest
 - Impacted by county policies
- Tell us “your community’s story”

2nd Question:

Would this community benefit from being “included within a single district for purposes of its effective and fair representation”?

- Or would it benefit more from having multiple representatives?

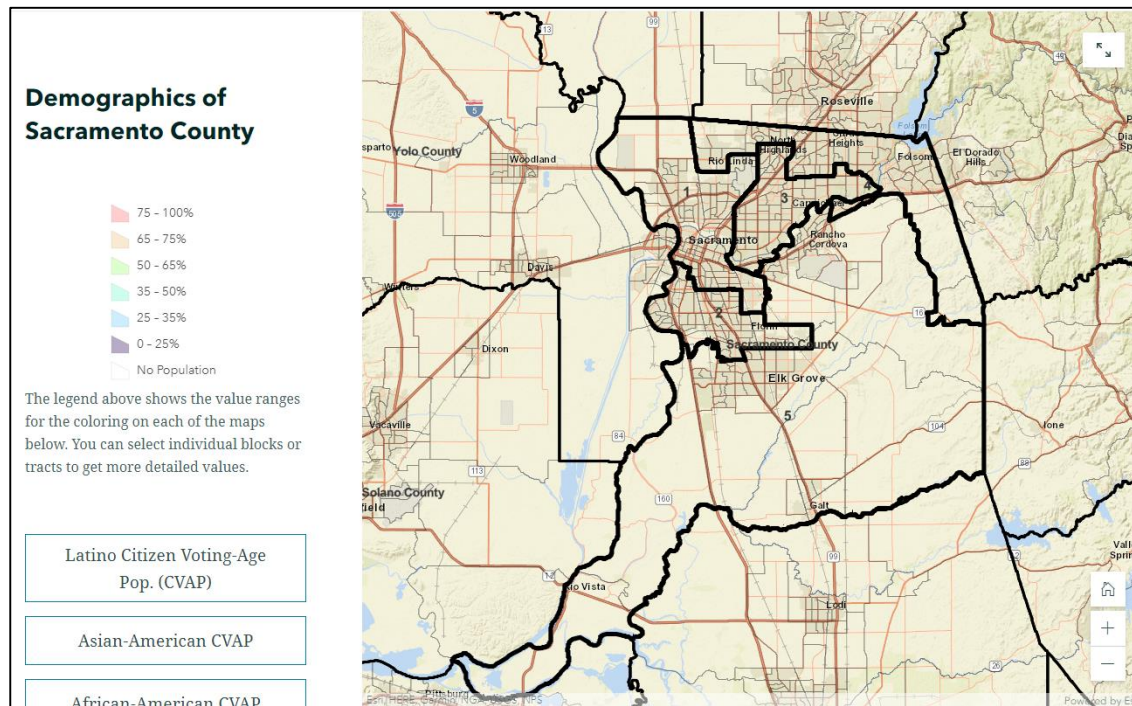
Definitions of Communities of Interest may not include relationships with political parties, incumbents, or political candidates.

Public Mapping and Map Review Tools

- **Different tools for different purposes**
- **Different tools for different levels of technical skill and interest**
 - Simple “learn about your community” map
 - Simple “review draft maps” tool
 - Easy-to-use “Draw your neighborhood” tool
 - Paper- and Excel-based simple “Draw a draft map” tools
 - Powerful, data-rich “Draw a draft map” tool

Story Map

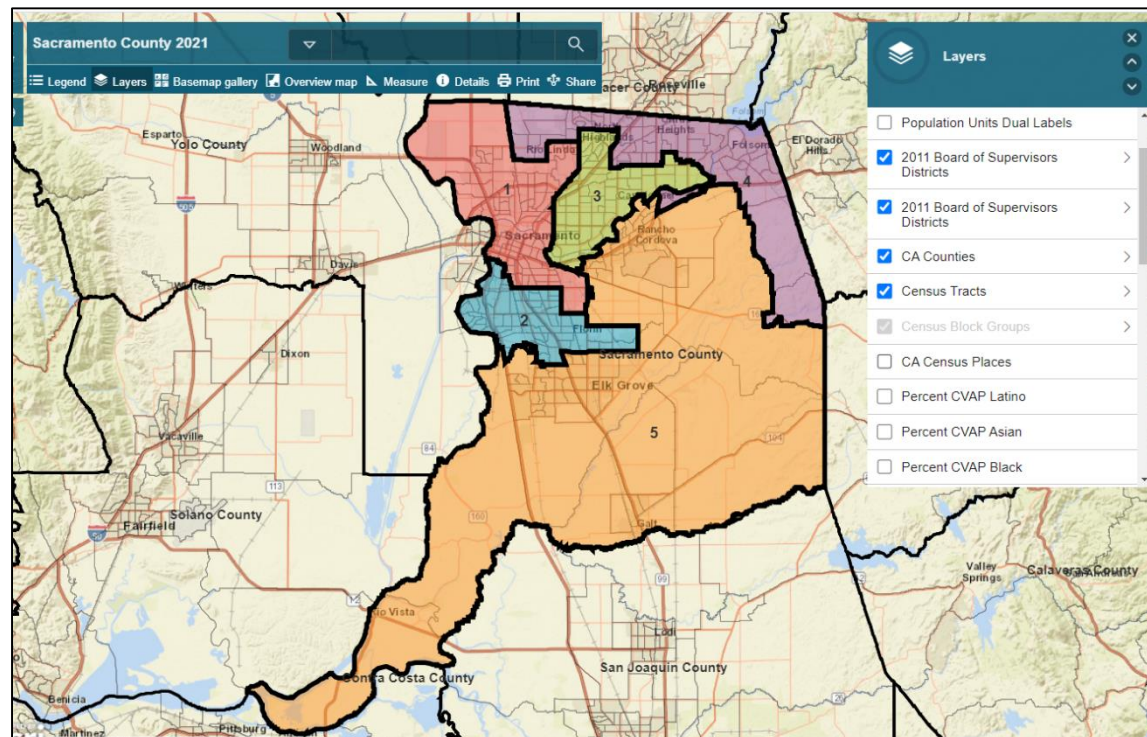
- **Easy to use “story” of demographic and other data**
 - ▣ Similar to PowerPoint, but interactive
 - ▣ Used to identify “communities of interest”



Simple Map Review Tool

□ Online Interactive Review Map

- ESRI's "ArcGIS Online" – similar to Google Maps in ease of use
- Used to review, analyze and compare maps, not to create them
- Includes overlays of "community of interest" and other Story Map data

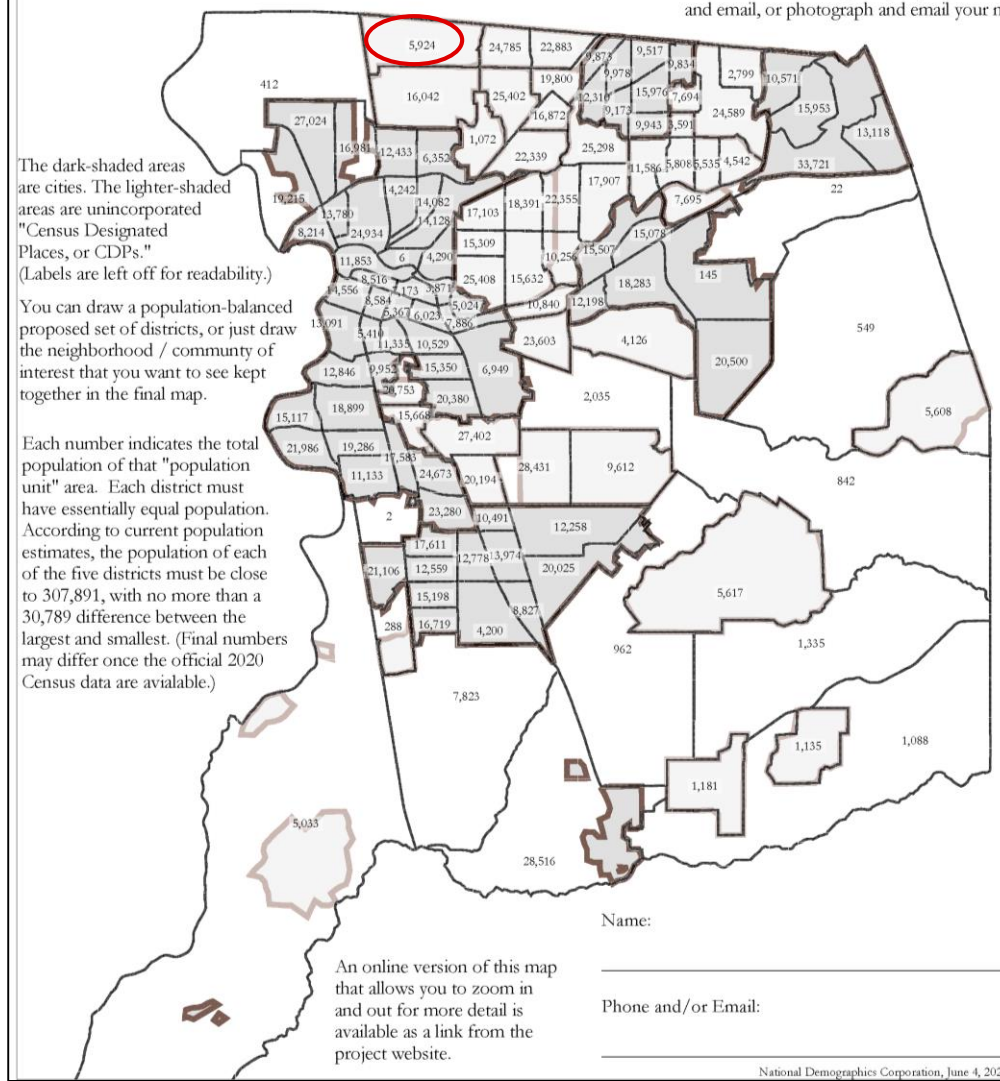


Simple Map Drawing Tool

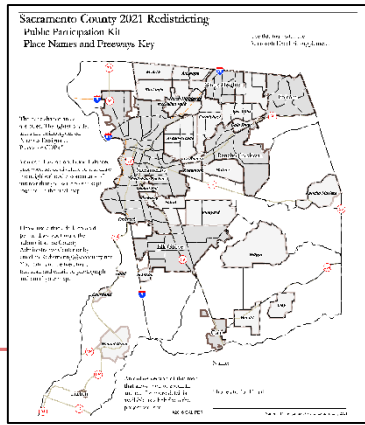


Sacramento County 2021 Redistricting Public Participation Kit Total Population Numbers by Population Unit

Please use a thick dark-colored pen to draw your map, then submit it at the County Administrative Center or by email to Redistricting@saccounty.net. You can hand-deliver, mail, fax, scan and email, or photograph and email your map.



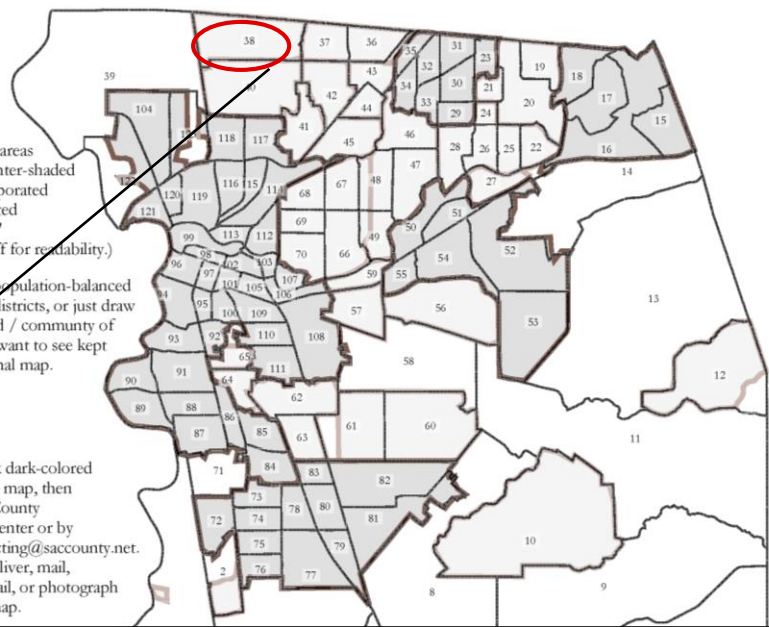
- **Paper "Public Participation Kit"**
 - ▣ For those without internet access or who prefer paper
 - ▣ Total Population Counts only – no demographic numbers



Also available:
map of places
and freeways



Simple Map + Excel Supplement



The dark-shaded areas are cities. The lighter-shaded areas are unincorporated "Census Designated Places, or CDPs." (Labels are left off for readability.)

You can draw a population-balanced proposed set of districts, or just draw the neighborhood / community of interest that you want to see kept together in the final map.

Please use a thick dark-colored pen to draw your map, then submit it at the County Administrative Center or by email to Redistricting@sacounty.net. You can hand-deliver, mail, fax, scan and email, or photograph and email your map.

- "Public Participation Kit"
 - ▣ For those who know Excel and do not wish to use online tools
 - ▣ Excel does the math

Totals by District Assigned													Ideal population:		307,891	
Sacramento County 2021 Public Participation Kit																
enter your name here																
Group	Category	Counts					Unassigned	Total	Percentages					Unassigned	Total	
		1	2	3	4	5			1	2	3	4	5			
2020 Est.	Tot. Pop.	0	0	0	0	0	1,539,453	1,539,453								
	Deviation from Ideal	-307,891	-307,891	-307,891	-307,891	-307,891		0	-100.00%	-100.00%	-100.00%	-100.00%	-100.00%		0.00%	
Open Voting	Total CVAP	0	0	0	0	0	1,035,680	1,035,680	#DIV/0!	#DIV/0!	#DIV/0!	#DIV/0!	#DIV/0!	12%	18%	
	Hispanic	0	0	0	0	0	185,225	185,225	#DIV/0!	#DIV/0!	#DIV/0!	#DIV/0!	#DIV/0!	35%	32%	
	NH Wht	0	0	0	0	0	540,569	540,569	#DIV/0!	#DIV/0!	#DIV/0!	#DIV/0!	#DIV/0!	8%	11%	
	NH Blk	0	0	0	0	0	116,457	116,457	#DIV/0!	#DIV/0!	#DIV/0!	#DIV/0!	#DIV/0!	10%	16%	
	NH Asn	0	0	0	0	0	161,584	161,584	#DIV/0!	#DIV/0!	#DIV/0!	#DIV/0!	#DIV/0!			
Nov. 2016 Registration	Total Reg.	0	0	0	0	0	892,455	892,455	#DIV/0!	#DIV/0!	#DIV/0!	#DIV/0!	#DIV/0!	9%	16%	
	Latino	0	0	0	0	0	139,229	139,229	#DIV/0!	#DIV/0!	#DIV/0!	#DIV/0!	#DIV/0!	5%	8%	
	Asian-American	0	0	0	0	0	73,835	73,835	#DIV/0!	#DIV/0!	#DIV/0!	#DIV/0!	#DIV/0!	44%	76%	
	Other	0	0	0	0	0	679,391	679,391	#DIV/0!	#DIV/0!	#DIV/0!	#DIV/0!	#DIV/0!			
Nov. 2016 Voters	Total Voters	0	0	0	0	0	721,624	721,624	#DIV/0!	#DIV/0!	#DIV/0!	#DIV/0!	#DIV/0!	7%	15%	
	Latino	0	0	0	0	0	106,179	106,179	#DIV/0!	#DIV/0!	#DIV/0!	#DIV/0!	#DIV/0!	4%	8%	
	Asian-American	0	0	0	0	0	58,282	58,282	#DIV/0!	#DIV/0!	#DIV/0!	#DIV/0!	#DIV/0!	36%	77%	
	Other	0	0	0	0	0	557,163	557,163	#DIV/0!	#DIV/0!	#DIV/0!	#DIV/0!	#DIV/0!			
Submitter's Comments about the plan:																
think this map makes sense because . . .																

Quick Reference: Total Population & Deviation from Ideal by district														
D1:	0	-307,891	D2:	0	-307,891	D3:	0	-307,891	D4:	0	-307,891	D5:	0	-307,891
District (1-5)	Unit	Tot. Pop.	tot	Hisp	NH Wht	NH Blk	Asn	tot	latino	asn	other	tot	latino	Nov. 2016
1	5,033	3,442	805	2,209	154	191	3,089	618	71	2,400	2,598	469		
2	288	166	32	119	0	14	125	22	7	96	103	14		
3	7,823	4,932	1,032	2,061	987	529	489	110	7	372	389	72		
4	28,516	12,863	6,185	10,599	631	1,159	15,836	4,803	313	10,720	12,928	3,617		
5	1,788	788	193	544	11	31	686	125	19	543	583	94		
6	1,181	904	132	679	33	41	775	128	14	633	658	95		
7	1,135	824	151	648	2	9	822	103	10	709	709	76		
8	962	735	284	374	6	32	551	107	14	430	465	76		



DistrictR

- **“Draw Your Community of Interest” focus**
 - ▣ Also includes simple district-mapping tool

Tag: saccounty

Welcome to the DistrictR Community of Interest public mapping tool for Sacramento County's 2021 supervisorial redistricting.

As part of the redistricting process, the California FAIR MAPS Act includes neighborhoods and “Communities of Interest” as important considerations. California law defines Communities of Interest as “a population that shares common social or economic interests that should be included within a single district for purposes of its effective and fair representation.”

To let the County know about your community and what brings it together, share your map and your story using this tool now.

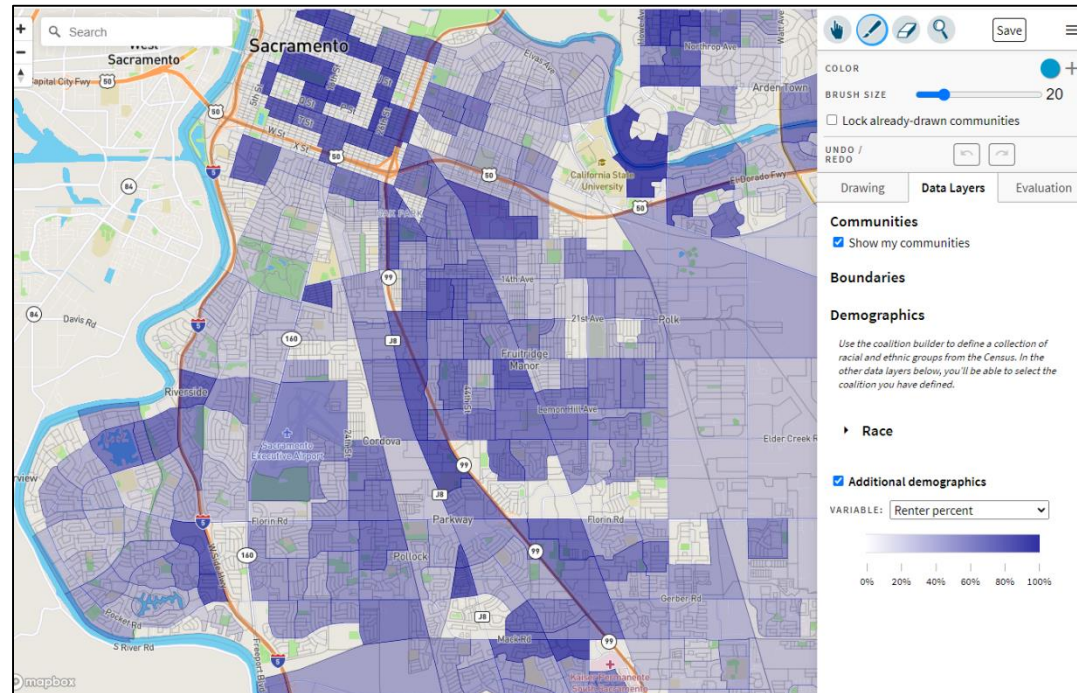
To display your map on this page, be sure the tag "SacCounty" is filled out after you've clicked "Save" to share the map.

To learn more about the County's redistricting effort, visit www.saccounty.net.

Start drawing districts

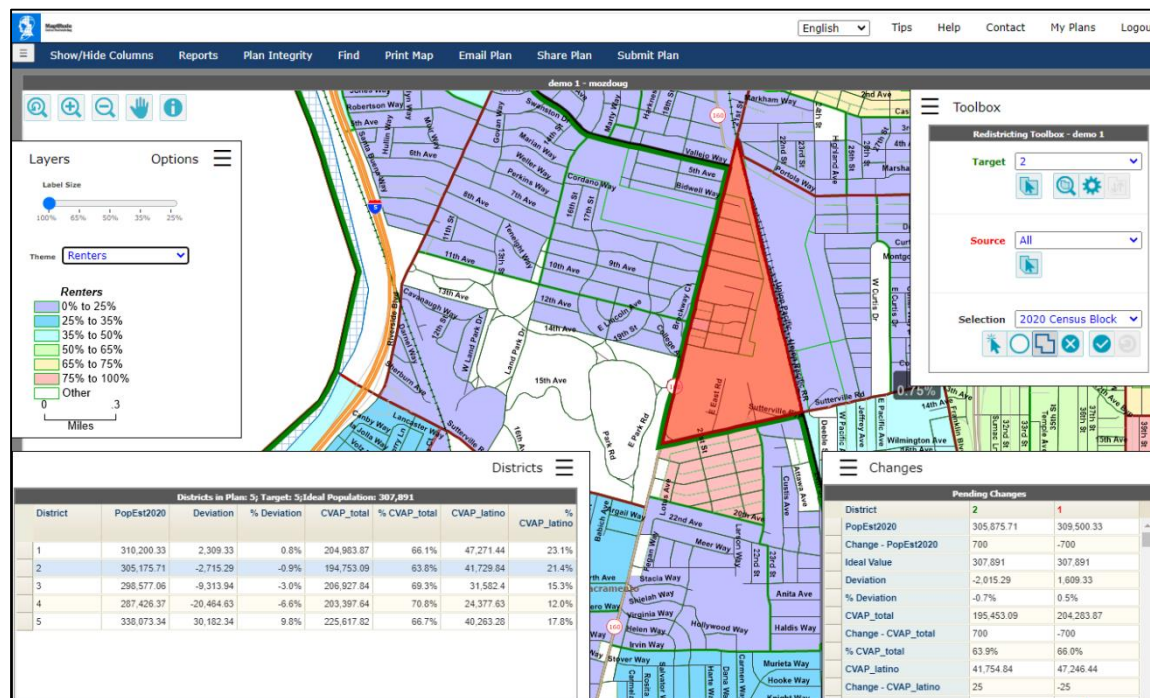
Click below to start with a blank map.

- Sacramento
5 Board Districts
Built out of blocks
- Sacramento
Identify a community
Built out of blocks



Caliper's "Maptitude Online Redistricting"

- **Full Database, Powerful Online Mapping Tool**
 - Powerful, common, data-rich online tool
 - Six language options: English, Spanish, Portuguese, Vietnamese, Mandarin and Korean
 - [Quick Start Guide](#)



Share Your Thoughts

**To make a live comment at this
workshop call:**

(916) 875-2500

Select 1 to comment

www.saccounty.net/Redistricting/

For questions call: (916) 874-5411

Email: Redistricting@saccounty.net